

BENEFITS WORKING GROUP



Analyzing and communicating the impacts of low-emission development

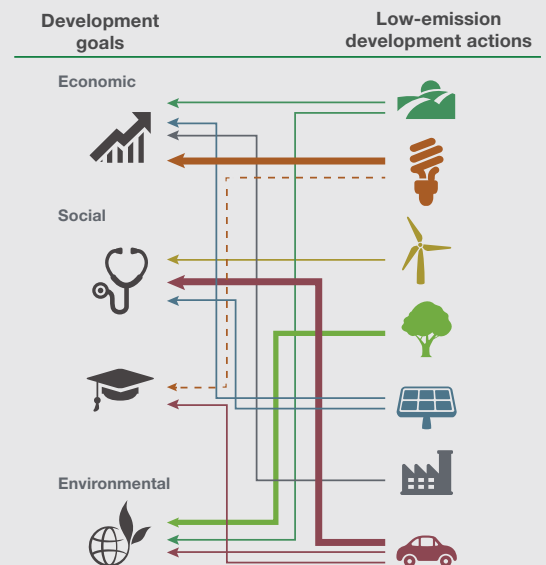
Understanding the impacts of low emission development strategies (LEDS) on broader development goals is of growing interest around the world. Among others, these goals include reducing poverty, enhancing economic growth, creating jobs, improving health and local environmental quality, expanding energy and water access, and facilitating gender equity. The LEDS Global Partnership (LEDS GP) Benefits Assessment Working Group aims to assist institutions in identifying, evaluating, and building awareness of the impacts (positive or negative) of LEDS measures on a country's social, economic, and environmental development goal.

The Energy Research Centre of the Netherlands (ECN), the Deutsche Gesellschaft für Internationale Zusammenarbeit (GIZ), and the Center for Study of Science, Technology & Policy lead the activities of this Working Group.

Benefits Working Group

The Benefits Assessment Working Group aims to support informed decision-making by considering how policies and programs that are intended to meet a goal may impact other development priorities. Development goals, such as economic growth, job creation and raising standards of living are the top priority for governments around the world. The Working Group helps to identify and understand how a government program or policy not only addresses this goal (or goals), but also the related objectives in the areas of public health, energy access, air quality and others.

For example, a policy to support economic growth through added capacity for electricity generation offers technology choices. The Benefits working group approach helps decision-makers understand the consequences of choosing renewable energy technologies. The approach goes beyond capital and operating costs and includes impacts on jobs, public health, energy security and other criteria, which speak to a broader set of goals.



LEDS activities in the energy, transportation, agriculture, forestry, and other sectors can impact economic, social, and environmental development goals.

BENEFITS WORKING GROUP IN ACTION

PEER LEARNING AND KNOWLEDGE SHARING

The Working Group facilitates peer-to-peer sharing and lessons learned from development impacts in analysts' countries through sharing of case studies, webinars, forums, and workshops. These activities are coordinated with related efforts by the U.S. government's Enhancing Capacity for Low Emission Development Strategies (EC-LEDS) and other initiatives.

TOOLS AND RESOURCES

The Working Group has developed a toolkit for assessing the development impacts of LEDS actions. This provides qualitative and quantitative tools, as well as cross-sectoral and sector-specific tools, data, and methods for evaluating the impacts of low-emission development options on a country's social, economic, and environmental development goals. This web-based, user friendly toolkit equips decision makers to explore policy options and build consensus with stakeholders to achieve low emission development and support national development objectives. You can find the toolkit at: www.ledsgp.org.

A further resource for identifying and communicating the impacts of LEDS actions on development priorities and help decision makers explore potential tradeoffs in policies. The tool is described in the NREL Paper 'Broadening the Appeal of Marginal Abatement Cost Curves: Capturing Both Carbon Mitigation and Development Benefits of Clean Energy Technologies', found at <http://www.nrel.gov/docs/fy12osti/54487.pdf>.

ADVISORY SERVICE

This working group provides timely, high-quality, no-fee technical assistance on DIA issues through the LEDS GP Remote Expert Assistance on LEDS (REAL) service. Experts from around the world are available to provide objective advice, conduct reviews and brief assessments, collect data, and recommend sources of longer-term support for individuals and organizations analyzing the impacts of LEDS measures on development priorities. To contact the REAL service, please visit "Technical Assistance" at: www.ledsgp.org.

DIA VISUAL TOOL OFFERS UNIQUE BENEFITS

Development-focused LEDS processes in Ghana, Kenya, Montenegro and Zambia have already benefited from the use of the DIA visual tool. Led by the DIA Working Group, these two pilot efforts have demonstrated how the tool complements and leverages other LEDS planning such as the Technology Needs Assessment (TNA) process or a marginal abatement cost (MAC) curve tool. In addition, it has been particularly effective in capturing the results of qualitative impact assessment methods. Going forward, lessons from these pilot projects and feedback from stakeholders will improve the tool and develop additional means for effectively communicating with different audiences.

Value of Benefits Assessment

- Informs and supports decision making to help policies and programs meet development objectives
- Involves new partners that may not otherwise be interested in climate protection
- Can increase access to climate and private finance.

➔ JOIN US

Membership of the Benefits Assessment Working Group is open to all interested parties. To join, contact Dr Krishnan at: sskrishnan9@gmail.com or Inga Zachow at: inga.zachow@giz.de.

The Low Emission Development Strategies Global Partnership (LEDS GP) was founded in 2011 to enhance coordination, information exchange and cooperation among countries and international programs working to advance low-emission, climate-resilient growth. The LEDS GP currently brings together LEDS leaders and practitioners from more than 160 countries and international institutions through innovative peer learning and collaboration forums and networks. For the full list of participants and more information on partnership activities, see: www.ledsgp.org | Email: secretariat@ledsgp.org.

FS-6A20-60915 • October 2015

Photo from iStock 13644365; illustration from the National Renewable Energy Laboratory