

## LEDS GP Energy Working Group

### 2016 Work plan

February 2016

*Alexander Ochs, LEDS GP Energy Working Group Chair, [aochs@worldwatch.org](mailto:aochs@worldwatch.org)*

*Philip Killeen, LEDS GP Energy Working Group Manager,  
[pkilleen@worldwatch.org](mailto:pkilleen@worldwatch.org),  
+1 202 745 8092 (ext. 591)*

The LEDS GP Energy Working Group consists of nearly 500 energy experts worldwide. Many practitioners within national governments, multilateral institutions, nongovernmental organizations, and private companies have already benefited from its initiatives. The group's work consists of core secretariat activities and signature knowledge projects, each of which have several components. The following activities are planned within the new allocation (\$102,202) that is projected to support activities for 2016.

#### Core secretariat activities

- **Advisory services and technical support** provided to LEDS GP participants, including its regional platforms, working groups, and country level stakeholders, policymakers, and experts. The Energy Working Group supports requests covering areas of analysis, planning, finance, and implementation, as well as measurement, reporting, and verification of climate compatible action in the energy sector.

#### About us

The Low Emission Development Strategies Global Partnership (LEDS GP) was founded to advance climate resilient low emission development through coordination, information exchange, and cooperation among programs and countries working to advance low emission growth. Launched in 2011, the partnership now brings together more than 160 governments and international institutions.

The Energy Working Group is one of LEDS GP's longest standing workstreams. By providing opportunities for learning, information exchange, and greater cooperation, the Energy Working Group assists countries around the world in designing and implementing successful climate compatible development strategies. Over 260 working group member practitioners from national governments, multilateral institutions, nongovernmental organizations, and private companies have already benefited from initiatives organized by the Energy Working Group.

- **Peer learning, training, and knowledge sharing opportunities** are offered to practitioners tasked with planning and implementing LEDS in the energy sector. This component includes the development and dissemination of energy LEDS online support materials such as toolkits, advisory notes, and policy papers; the design and execution of webinars; and the organization of energy sector sessions and in-person workshops at global and regional LEDS events.
- **Assisting in LEDS GP efforts to diversify fundraising resources** has been identified by the LEDS GP Secretariat as a priority action area across working groups and regional platforms. This effort is critical in supporting the continued development of capacity building, technical assistance, knowledge sharing, and collaborative activities across the Partnership. Through close collaboration with other working groups and regional platforms, and with a targeted focus on development of planned signature knowledge projects, the Energy Working Group will actively seek and incubate additional sources of funding.
- **Working Group administration and support activities** are provided to the LEDS GP Secretariat and working group members, including:
  - monitoring and evaluation quarterly reporting development and implementation (submitting reports as required by LEDS GP)
  - leading and reporting on quarterly working group and other coordination calls
  - coordinating with similar initiatives (such as the Climate Smart Planning Platform, Greening the Grid, etc.) to leverage common work and avoid duplication of effort
  - providing key resource content: data management and quarterly delivery of updated content for the Energy Working Group webpage and factsheet, newsletter, and annual global work program and strategy. Key content includes lists of new members, events, available tools, and other resources.

### Signature knowledge projects

These targeted projects respond to current knowledge and information gaps identified by the LEDS regional platforms and/or countries participating in LEDS GP. They have high global relevance and are implemented in close collaboration with the regional platforms. Two signature knowledge projects are planned for 2016.

#### LEDS GP Energy Communities of Practice

Formulated to support deeper technical collaboration and peer to peer learning on specific energy sector topics, the LEDS GP Energy Communities of Practice will help facilitate the implementation of effective and innovative energy sector policymaking at the country level across LEDS GP regional platforms. In 2016 the Energy Working Group will establish a Community of Practice focusing on a targeted energy sector topic of interest to multiple countries within one region, informed by key areas of need and interest identified by the regional platforms. Members will work jointly on developing and implementing solutions to a shared and specific challenge building on experience gained from successful country policies and approaches, using these countries as models, and will be supported by world-leading issue experts. In support of these efforts, the Energy Working Group will provide

interactive online sessions to connect Community of Practice members; design and execution of an in-person Community of Practice workshop at a LEDS GP regional or global event; and presentation of outcomes at the LEDS GP annual event. All of these outputs may be used to inform similar efforts within other working groups and to pursue external funding opportunities for further development. Interactive online sessions and in-person events will focus on providing technical support and guiding development of effective strategies and measures to address the chosen topic of interest. The Energy Working Group will also explore development of an expanded initiative to provide support to early mover countries on the selected topic, which could serve as a model to enable broader regional and global replication of effective measures. This could include development of a concept note and proposal, and efforts to secure support for such an expanded initiative.

View the [concept note](#) for the first Community of Practice on bioelectricity.

### *Sustainable Energy and Development World Atlas*

Targeting both LEDS experts and nonexperts, the *LEDS Sustainable Energy and Development World Atlas* aims to serve as a powerful tool for presenting successful energy LEDS and their broader cross-sectoral development impacts, while providing the LEDS GP network with a central forum for the exchange of energy sector knowledge. The *Atlas* will document low emission and climate compatible energy development projects from around the world which can serve as best practices. In 2016, the Energy Working Group plans to develop two compelling LEDS energy sector development benefit case studies. Besides documenting the development benefits of these projects, the case studies will also identify best practices to serve as examples for action elsewhere. The key objectives of the case studies are to:

- enhance near-term knowledge sharing on LEDS benefits in the energy sector through broad dissemination of the case studies to key LEDS decision makers and other stakeholders
- support fundraising for the *LEDS Sustainable Energy and Development World Atlas* by providing potential funders with substantive, high quality examples of the information to be provided in the *Atlas*
- provide content for the published *Atlas* after additional funding is secured.

The organizational structure of the LEDS GP Energy Working Group reflects its service function in responding to requests from LEDS GP members, particularly through the regional platforms, and its key goal of implementing projects in cooperation with the regional platforms (see Figure 1).

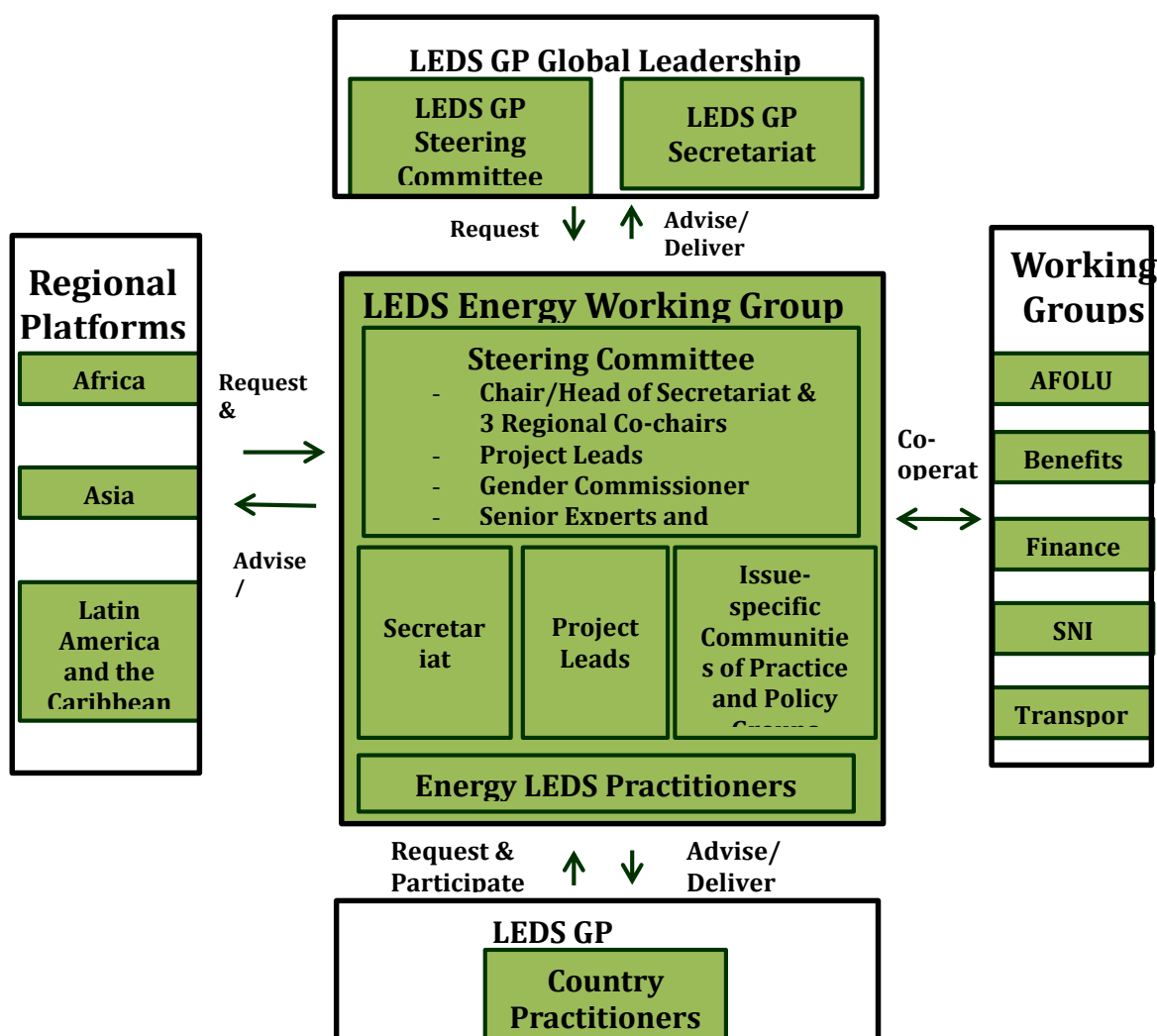


Figure 1 The Energy Working Group within the LEDS GP

The Energy Working Group's 2016 work plan responds to the following priority areas identified by the regional platforms.

- **Africa:** expanding regional peer to peer learning through toolkits, case studies, training; developing local advisory expertise networks and opportunities. The Africa Regional Platform identifies energy as a sectoral priority.
- **Asia:** improving assessment and communication tools on the associated economic benefits of LEDS planning; expanding capacity for energy planning; supporting the development of a renewable energy grid integration network. The Asia Regional Platform also identifies energy as a sectoral priority.
- **Latin America and the Caribbean:** supporting the development of economic and financing tools for private sector investment and carbon market development; facilitating subnational integration of LEDS solutions for sustainable urban development planning within the energy sector; and enabling learning and application of effective bioenergy measures to support rural development.

## Overview of 2016 activities and budgetary needs

**Total budget \$135,972.50**

**(\$102,202.00 + Worldwatch in-kind contribution \$33,771.00)**

Activity	Project deliverable	Performance metrics	Budget
<b>1. Core Secretariat activities</b>			<b>\$96,732.50</b>
Providing energy sector technical advisory services to LEDS GP participants			\$7,770
<b>On-demand assistance</b> <ul style="list-style-type: none"> <li>Respond to countries' requests for technical (non-policy related) assistance by providing the Energy Working Group's expertise or by connecting them to other international experts and facilitating access to Clean Energy Solutions Center support on policy related requests</li> <li>Advise regional platforms, sectoral working groups, and the Global Secretariat on energy activities</li> </ul>	<ul style="list-style-type: none"> <li>Where possible, answer country requests directly</li> <li>Where necessary, refer individuals to appropriate energy experts within or outside of the Energy Working Group, including partnering organizations such as the Clean Energy Solutions Center and the Remote Expert Assistance on LEDS (REAL) platform</li> <li>Provide input and feedback on energy activities to LEDS GP regional platforms and sectoral working groups</li> </ul>	<ul style="list-style-type: none"> <li>At least 10 country requests answered</li> <li>At least 10 experts referred</li> <li>Feedback delivered to sectoral working groups, regional platforms, and Global Secretariat as needed</li> </ul> <p>Support the Secretariat in following up 6–12 months after requests answered to track impact</p>	

Offering peer learning, training, and knowledge sharing opportunities			\$40,972.50
<b>Energy LEDS Toolkit Development</b> <ul style="list-style-type: none"> <li>Collaborate with Asian Regional Platform to produce webinars highlighting successful implementation of tools from Energy LEDS Toolkit on policymaking in countries from the region</li> <li>Produce short case studies highlighting successful implementation of tools from Energy LEDS Toolkit on policymaking</li> <li>Expand outreach efforts on Toolkit through relevant newsletters, distribution lists, and at events and workshops</li> </ul>	<ul style="list-style-type: none"> <li>Develop, host, and record three webinars</li> <li>Produce two short case studies (1–2 pages)</li> </ul>	<ul style="list-style-type: none"> <li>Success measured by attendance and satisfaction and impact survey, as part of each webinar               <ul style="list-style-type: none"> <li>Support the Secretariat in following up 6–12 months after webinars to track impact</li> </ul> </li> <li>Web version of toolkit and case studies disseminated to at least three leading websites               <ul style="list-style-type: none"> <li>Support the Secretariat in tracking impact of toolkit and case studies via surveys and interviews</li> </ul> </li> </ul>	\$17,872.50
<b>Energy LEDS webinars</b> <ul style="list-style-type: none"> <li>Design and host webinars on low emission, climate resilient energy strategies</li> <li>Continue webinar series on regional energy LEDS leaders</li> </ul>	<ul style="list-style-type: none"> <li>Consult with regional platforms to determine key topics of interest and need for webinar series</li> <li>Design and host two webinars on low emission, climate resilient energy strategies</li> </ul>	<ul style="list-style-type: none"> <li>Two webinars</li> <li>Success measured by attendance and satisfaction and impact survey, as part of each webinar               <ul style="list-style-type: none"> <li>Support the Secretariat in following up 6–12 months after webinars to track impact</li> </ul> </li> </ul>	\$12,630

<p><b>Energy sector training sessions at LEDS GP regional and global events</b></p> <ul style="list-style-type: none"> <li>Lead with the design, organization, and implementation of energy sector sessions and workshops at global and regional LEDS events</li> </ul>	<ul style="list-style-type: none"> <li>Design and deliver in-depth energy training at two planned regional platform workshops</li> <li>Africa LEDS Partnership regional workshop in Rwanda</li> <li>One other regional workshop TBD</li> </ul>	<ul style="list-style-type: none"> <li>Draft agenda and training materials for each event to be reviewed by LEDS GP Secretariat (NREL) and regional platforms for input</li> <li>Participation and execution through senior Energy Working Group member</li> <li>Success measured by attendance and satisfaction and impact survey               <ul style="list-style-type: none"> <li>Support the Secretariat in following up 6-12 months after training to track impact</li> </ul> </li> </ul>	<p>\$10,470</p>
---	--	---	-----------------



Assisting in LEDS GP fundraising activities			\$9,150
<b>Feedback and input on LEDS GP fundraising strategy</b> <ul style="list-style-type: none"> <li>Complete outreach to potential donors on a monthly basis to support activities of the Energy Working Group</li> <li>Develop fundraising concept notes for deeper technical activity building</li> </ul>	<ul style="list-style-type: none"> <li>Provide monthly lists of organizations to which outreach has been conducted and detail the results of the outreach in each quarterly report</li> <li>Develop two fundraising concept notes for deeper technical activities and capacity building. Potential opportunities include:               <ul style="list-style-type: none"> <li>Collaborate with Finance Working Group and Africa LEDS Partnership on an energy investment prospectus for African countries</li> <li>Building on initial Communities of Practice activities, develop an expanded initiative to provide support to at least two early mover countries on the application of the selected policy topic, which could serve as models to enable broader regional and global replication of effective measures</li> </ul> </li> </ul>	<ul style="list-style-type: none"> <li>Results of monthly outreach to be reported in each quarterly report               <ul style="list-style-type: none"> <li>Support the Secretariat in tracking funding secured via fundraising activities</li> </ul> </li> </ul>	
Energy Working Group administration and support activities			\$32,640
<b>Administration and management</b> <ul style="list-style-type: none"> <li>Coordinate with LEDS GP leadership, regional platforms, working groups, and members</li> <li>Provide input to LEDS GP newsletter, webpage, annual global work program and strategy, and Energy Working Group factsheet</li> <li>Execute Energy Working Group management (including membership calls, steering committee meetings, quarterly reporting, and coordination with similar external initiatives)</li> <li>Administer Energy Working Group financially</li> </ul>			
Travel			\$6,200



## 2. Signature knowledge projects

Activity	Project deliverable	Performance metrics	Budget
Development of Communities of Practice for energy LEDS design			\$14,280
<ul style="list-style-type: none"> <li>Using input from LEDS GP and Energy Working Group memberships and regional platform leads, select analytical and/or policy focus</li> <li>Design, create, and facilitate Communities of Practice for the selected analytical or policy area</li> <li>Document introduction of results into domestic planning/decision making processes and disseminate lessons learned through interactive online sessions; an in-person Community of Practice workshop at a LEDS GP regional or global event; and presentation of outcomes at the LEDS GP annual event</li> </ul>	<ul style="list-style-type: none"> <li>Design and establish first Community of Practice using inputs from LEDS GP and Energy Working Group memberships and regional platform leads</li> <li>Actively work on policy design during interactive online sessions</li> <li>Organize and execute personal meeting at LEDS GP regional or global workshop</li> <li>Present final results to responsible ministries/parliament committees</li> <li>Present lessons learned at LEDS GP annual event</li> </ul>	<ul style="list-style-type: none"> <li>Communities of Practice online platform established; 5–10 individuals per policy issue actively engaged</li> <li>Five to seven online working group sessions held</li> <li>Final results reviewed and discussed</li> <li>Resulting policy proposals discussed</li> <li>Results and lessons learned disseminated to broader audience through blog series and/or brief report as well as a presentation at LEDS GP event</li> <li>Ultimately, success determined by number of policies/policy proposals designed</li> <li>Goal of at least three policy proposals per Community of Practice entering policymaking process (e.g. reviewed by ministry high level official and/or parliamentary committee) <ul style="list-style-type: none"> <li>Support the Secretariat in following up with Community members 6–12 months after implementation to track impact</li> </ul> </li> </ul>	

Sustainable Energy and Development World Atlas			\$24,960
<ul style="list-style-type: none"> <li>• Design, write, and feature compelling case studies documenting low emission, climate compatible energy projects from around the world and their associated development benefits/impacts</li> <li>• Portray best practices that can serve as examples for action elsewhere</li> <li>• Support acquisition of external fundraising for <i>LEDS Sustainable Energy and Development World Atlas</i> through providing potential funders substantive, high quality examples of content</li> </ul>	<ul style="list-style-type: none"> <li>• Using inputs from the respective regional platforms hosting the target country, design and write two case studies</li> </ul>	<ul style="list-style-type: none"> <li>• Case studies selected and content developed</li> <li>• Online project launched with all case study materials</li> <li>• Project promoted broadly with a focus on attracting external fundraising for the final iteration of the <i>Atlas</i> <ul style="list-style-type: none"> <li>◦ Support the Secretariat in tracking impact of case studies via surveys and interviews</li> </ul> </li> </ul>	

This document is from the LEDS GP; a global program for which the United States National Renewable Energy Laboratory (NREL) and the Climate and Development Knowledge Network (CDKN) serve as the Secretariat. NREL is a national laboratory of the U.S. Department of Energy, Office of Energy Efficiency and Renewable Energy, operated by the Alliance for Sustainable Energy LLC. CDKN is a program funded by the UK Department for International Development (DFID) and the Netherlands Directorate-General for International Cooperation (DGIS) for the benefit of developing countries; with further funding from the United States Department of State for the co-management of the Low-Emission Development Strategies Global Partnership (LEDS GP). The views expressed and information contained in it are not necessarily those of, or endorsed by, DFID, DGIS, the US Department of State, NREL, US Department of Energy, or the entities managing the delivery of CDKN, which can accept no responsibility or liability for such views, completeness or accuracy of the information or for any reliance placed on them. This publication has been prepared for general guidance on matters of interest only, and does not constitute professional advice. You should not act upon the information contained in this publication without obtaining specific professional advice. No representation or warranty (express or implied) is given as to the accuracy or completeness of the information contained in this publication, and, to the extent permitted by law, the entities managing the delivery of CDKN and NREL do not accept or assume any liability, responsibility or duty of care for any consequences of you or anyone else acting, or refraining to act, in reliance on the information contained in this publication or for any decision based on it.